

PART NUMBERS		DESCRIPTION	MEASUREMENT IN INCHES			MEASUREMENT IN MM		
THAT HAVE			OD	ID	W	OD	ID	W
THIS BEARING	60103C	Q1134UL ANGULAR CONTACT FLANGED STAINLESS STEEL, SINGLE SHIELD, PHENOLIC STAR 430K/SWL BEARINGS	.250/.296	0.125	0.091	6.35/7.52	3.175	2.311
PART NUMBERS		DESCRIPTION	MEASUREMENT IN INCHES			MEASUREMENT IN MM		
THAT HAVE			OD	ID	W	OD	ID	W
THIS BEARING	10118A	Q1138KA STRAIGHT RADIAL DOUBLE SHIELDED STAINLESS STEEL SPECIAL BEARING FOR KAVO INTERFLEX FRONT	0.237	0.077	0.09	6	1.95	2.28
PART NUMBERS		DESCRIPTION	MEASUREMENT IN INCHES			MEASUREMENT IN MM		
THAT HAVE			OD	ID	W	OD	ID	W
THIS BEARING	10118B	Q1138KB STRAIGHT RADIAL DOUBLE SHIELDED STAINLESS STEEL SPECIAL BEARING KAVO INTERFLEX REAR	0.275	0.118	0.077	6.98	3	1.95
PART NUMBERS		DESCRIPTION	MEASUREMENT IN INCHES			MEASUREMENT IN MM		
THAT HAVE			OD	ID	W	OD	ID	W
THIS BEARING	40470A	Q1139U STEEL STRAIGHT MIDWEST SHORTY NOSE CONE (LATCH) REAR BRG	0.499	0.187	0.156	12.68	4.74	3.95
PART NUMBERS		DESCRIPTION	MEASUREMENT IN INCHES			MEASUREMENT IN MM		
THAT HAVE			OD/FL	ID	W	OD/FL	ID	W
THIS BEARING	40405SEC	FLANGED INTERGRAL SHIELD PHENOLIC MYONIC BEARING MIDWEST STYLUS LTL EASY CARE BEARING	.2797/.2960	0.125	0.113	7.15/7.519	3.175	2.87
PART NUMBERS		DESCRIPTION	MEASUREMENT IN INCHES			MEASUREMENT IN MM		
THAT HAVE			OD/FL	ID	W	OD/FL	ID	W
THIS BEARING	40405BP	FLANGED STAINLESS STEEL PHENOLIC MYONIC BEARING RADIAL MIDWEST QUIET AIR, TRADITION, XGT	.250/.2960	0.125	0.1094	6.35/7.518	3.175	2.78
PART NUMBERS		DESCRIPTION	MEASUREMENT IN INCHES			MEASUREMENT IN MM		
THAT HAVE			OD	ID	W	OD	ID	W
THIS BEARING	40405CP	STRAIGHT RADIAL PHENOLIC MYONIC MIDWEST TRADITION, QUIET AIR, MANY APPLICATIONS	0.25	0.125	0.0937	6.35	3.175	2.38
PART NUMBERS		DESCRIPTION	MEASUREMENT IN INCHES			MEASUREMENT IN MM		
THAT HAVE			OD/FL	ID	W	OD/FL	ID	W
THIS BEARING	60103CP	60103CP PHENOLIC STAINLESS STEEL FLANGED MYONIC STAR 430 BEARINGS	.250/.2960	0.125	0.1094	6.35/7.518	3.175	2.78

PART NUMBERS THAT HAVE THIS BEARING	DESCRIPTION	MEASUREMENT IN INCHES			MEASUREMENT IN MM		
		OD/FL	ID	W	OD/FL	ID	W
	ANGULAR CONTACT,FLANGED STAINLESS SINGLE SHIELD POLYAMIDE (TORLON) Q1111L	.25/.296	0.125	0.109	6.34/7.518	3.2	2.736
30101	<i>SBI/CUTTERJET/MIN/OPTIK</i>						
40405	<i>MIDWEST QUIET AIR FLANGED</i>						
40405A	<i>MIDWEST QUIET AIR FLANGED</i>						
40405ANG	<i>MIDWEST QUIET AIR FLANGED MIDWEST TRADITION FLANGED MIDWEST QUIET AIR FLANGED</i>						
50107ANG	<i>VIPER FLANGED BEARING DENTEX MS-M MINI PB TURBINE DABI ATLANTE RS-350 TURBINE</i>						

PART NUMBERS THAT HAVE THIS BEARING	DESCRIPTION	MEASUREMENT IN INCHES			MEASUREMENT IN MM		
		OD/FL	ID	Width	OD/FL	ID	Width
	RADIAL CONTACT,FLANGED STAINLESS SINGLE SHIELD POLYAMIDE (TORLON) Q1111LR	.25/.296	0.125	0.109	6.34/7.518		2.7686
10014	<i>NSK Phatelus Bearing</i>						
40405B	<i>Midwest Bearing</i>						
40405RAD	<i>Midwest Bearing flanged in set</i>						
40418	<i>Midwest Tradition Bearing flanged in set</i>						
50107	<i>ADEC/Viper 360 /Top Air</i>						

PART NUMBERS THAT HAVE THIS BEARING	DESCRIPTION	MEASUREMENT IN INCHES			MEASUREMENT IN MM		
		OD	ID	Width	OD	ID	Width
	ANGULAR CONTACT POLYAMIDE (TORLON) STAINLESS STEEL Q1111U	0.25	0.125	0.093	6.35	3.175	2.36
40405ANG	<i>MIDWEST TRADITION/ QUIET AIR STRAIGHT BEARING</i>						
40405D	<i>MIDWEST TRADITION/ QUIET AIR STRAIGHT BEARING</i>						

PART NUMBERS THAT HAVE	DESCRIPTION	MEASUREMENT IN INCHES			MEASUREMENT IN MM		
		OD	ID	W	OD	ID	W
	RADIAL CONTACT POLAMIDE(TORLON) STAINLESS STEEL Q1112U	0.25	0.125	0.093	6.35	3.175	2.36
30112	<i>PUSH BUTTON AND STANDARD CANISTER</i>						
40405	<i>MIDWEST QUIET AIR RADIAL STR.OF SET</i>						
40405C	<i>MIDWEST QUIET AIR AND RADIAL STR.</i>						
40405RAD	<i>MIDWEST QUIET AIR AND TRADITON RADIAL STR.OF SET</i>						
40417	<i>MIDWEST 8000/I SET</i>						
40418	<i>MIDWEST TRADITION STR. OF SET</i>						
40434	<i>MIDWEST TRUE TORC REAR BEARING</i>						

PART NUMBERS THAT HAVE THIS BEARING	DESCRIPTION	MEASUREMENT IN INCHES			MEASUREMENT IN MM		
		OD/FL	ID	W	OD/FL	ID	W
	RADIAL CONTACT DOUBLE SHIELD PHELONIC GREASED BEARING (Q1114ULK)	0.3125	0.125	0.1406	7.92	3.175	3.571

10012A2 BIEN AIR
60101 STAR FUTURA 1 & II
60104 STARFLITE
60105 STAR CONCENTRIC

PART NUMBERS THAT HAVE THIS BEARING	DESCRIPTION	MEASUREMENT IN INCHES			MEASUREMENT IN MM		
		OD	ID	W	OD	ID	W
	RADIAL SINGLE SHIELD PHENOLIC GREASED STRAIGHT BEARING (Q1114ULK1)	0.3215	0.125	0.1406	8.166	3.175	3.571

10012A1 BEIN AIR/BORA/LAB NEY
60101A BIEN AIR BLACK PEARL NEY
9000A BIEN AIR BLACK PEARL NEY

PART NUMBERS THAT HAVE THIS BEARING	DESCRIPTION	MEASUREMENT IN INCHES			MEASUREMENT IN MM		
		OD	ID	W	OD	ID	W
	RADIAL SINGLE SHIELD POLYAMIDE(TORLOR) Q1115UL)	0.25	0.125	0.109	6.35	3.175	2.769

10011 BEIN AIR ONDINE/PRESTIGE/SYNEA/SIRONA
60102 STAR ULTRA, TOP AIR/LIET 898
60106 STAR CONCENTRIC MINI, W&H SYENA
70101 MYTEE MICRON
80101 SABRA
ALSO USED ON: W&H TREND,/ADEC 396-796-896/ W&H TOPAIR 898
SIRONA T2/T3 RACER MINI SWIVEL -SIRONA T2/T3
SYNEA TA98 LED TURBINE

PART NUMBERS THAT HAVE THIS BEARING	DESCRIPTION	MEASUREMENT IN INCHES			MEASUREMENT IN MM		
		OD/STEP	ID	W	OD/STEP	ID	W
	RADIAL POLYAMIDE STAINLESS STEEL SINGLE SHIELD (Q1118UL)	.235/.250	0.125	0.109	5.96/6.34	3.18	2.76

10101 KAVO AND LYNX HANDPIECE

PART NUMBERS THAT HAVE THIS BEARING	DESCRIPTION	MEASUREMENT IN INCHES			MEASUREMENT IN MM		
		OD/STEP	ID	W	OD/STEP	ID	W
	ANGULAR CONTACT SINGLE STAINLESS STEEL SINGLE SHIELD POLYAMIDE STEPPED (Q1118ULANG)	.250/.2350	0.125	0.1094	6.35/5.969	3.175	2.779

10101ANG KAVO SM/LG AMD LUX 647/649 BEARING
10101KV647/649 KAVO 647/649
F4 TURBINE

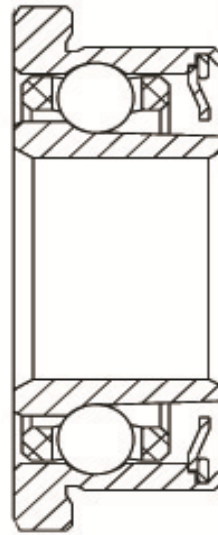
PART NUMBERS THAT HAVE THIS BEARING	DESCRIPTION	MEASUREMENT IN INCHES			MEASUREMENT IN MM		
		OD/STEP	ID	W	OD/STEP	ID	W
10101A	RADIAL PHELONIC (LINEN BASE) SINGLE SHIELD STAINLESS STEEL STEPPED BEARING Q1118ULK) KAVO SM AND LARGE/SIRONA PUSH BUTTON BEARING SIRONA TC3, VECTOR	.250/.235	0.125	0.1094	6.35/5.969	3.175	2.779
PART NUMBERS THAT HAVE THIS BEARING	DESCRIPTION	MEASUREMENT IN INCHES			MEASUREMENT IN MM		
		OD/FL	ID	W	OD/FL	ID	W
40421	STEEL BEARINGS RADIAL STRAIGHT (Q1119IL) MINI BEARINGS USED FOR VARIOUS USES	0.186	0.093	0.093	4.73	2.316	2.36
PART NUMBERS THAT HAVE THIS BEARING	DESCRIPTION	MEASUREMENT IN INCHES			MEASUREMENT IN MM		
		OD	ID	W	OD	ID	W
40431 40435	RADIAL POLYAMIDE (TORLON) STAINLESS STEEL UNFLANGED BEARING (Q1119U) MIDWEST TRU TORQ TIGHTENING ROD BEARING MIDWEST TRU TORQ/SHORTY DRIVE RING BEARING	0.187	0.094	0.0625	4.75	2.39	1.59
PART NUMBERS THAT HAVE THIS BEARING	DESCRIPTION	MEASUREMENT IN INCHES			MEASUREMENT IN MM		
		OD	ID	W	OD	ID	W
40430	RADIAL CONTACT NO SHIELDED POLYAMIDE Q1121 MIDWEST TRU TORC SPINDLE BEARING	0.312	0.219	0.276	7.92	5.56	7.01
PART NUMBERS THAT HAVE THIS BEARING	DESCRIPTION	MEASUREMENT IN INCHES			MEASUREMENT IN MM		
		OD	ID	W	OD	ID	W
40432	ANGULAR CONTACT SINGLE SHIELDED STAINLESS Q1122 MIDWEST TRU TORC SPINDLE BEARING	0.625	0.25	0.196	15.88	6.34	4.96
PART NUMBERS THAT HAVE THIS BEARING	DESCRIPTION	MEASUREMENT IN INCHES			MEASUREMENT IN MM		
		OD	ID	W	OD	ID	W
60225	RADIAL CONTACT STRAIGHT BEARING (Q1123) STAR TITAN BEARING (front)	0.312	0.125	0.109	7.12	3.18	2.76
PART NUMBERS THAT HAVE THIS BEARING	DESCRIPTION	MEASUREMENT IN INCHES			MEASUREMENT IN MM		
		OD	ID	W	OD	ID	W
60225	RADIAL CONTACT STRAIGHT BEARING (Q1124) STAR TITAN BEARING (front)	0.312	0.125	0.109	7.12	3.18	2.76
PART NUMBERS THAT HAVE THIS BEARING	DESCRIPTION	MEASUREMENT IN INCHES			MEASUREMENT IN MM		
		OD	ID	W	OD	ID	W
60224	Q1125 RADIAL CONTACT STRAIGHT BEARING STAR TITAN BEARING (rear)	0.375	0.125	0.109	9.52	3.18	2.76

PART NUMBERS THAT HAVE THIS BEARING	DESCRIPTION	MEASUREMENT IN INCHES			MEASUREMENT IN MM		
		OD	ID	W	OD	ID	W
60223	STAR TITAN BEARING (front)						
PART NUMBERS THAT HAVE THIS BEARING	DESCRIPTION	MEASUREMENT IN INCHES			MEASUREMENT IN MM		
		OD	ID	W	OD	ID	W
50570 60251A	Q1127 RADIAL CONTACT STRAIGHT BEARING CHAMPION LITTLE FRONT CHUCK BEARING STAR NOSE CONE FRONT BEARING	0.375	0.25	0.125	9.52	6.35	3.16
PART NUMBERS THAT HAVE THIS BEARING	DESCRIPTION	MEASUREMENT IN INCHES			MEASUREMENT IN MM		
		OD	ID	W	OD	ID	W
40436 60251	Q1128 STRAIGHT RADIAL BEARING FRONT SPINDLE BEARING FOR MW SHORTY 1 & 2 CHAMPON LITTLE GUY NOSE CONE BACK BEARING	0.375	0.186	0.125	9.52	4.73	3.16
PART NUMBERS THAT HAVE THIS BEARING	DESCRIPTION	MEASUREMENT IN INCHES			MEASUREMENT IN MM		
		OD	ID	W	OD	ID	W
50106 50106B	RADIAL STAINLESS STEEL POLYAMIDE (TORLON) SINGLE SHIELD Q 1132L LARES 557/757 NON PUSH BUTTON LARES 557/757 PUSH BUTTON THICK (UPPER)	0.25	0.125	0.093	6.35	3.175	2.36
PART NUMBERS THAT HAVE THIS BEARING	DESCRIPTION	MEASUREMENT IN INCHES			MEASUREMENT IN MM		
		OD	ID	W	OD	ID	W
50108A	Q1132U RADIAL POLYAMIDE STAINLESS STEEL STRAIGHT BEARING LARES 557/757 PUSH BUTTON THIN (UPPER)	0.25	0.125	0.075	6.35	3.175	1.905
PART NUMBERS THAT HAVE THIS BEARING	DESCRIPTION	MEASUREMENT IN INCHES			MEASUREMENT IN MM		
		OD/FL	ID	W	OD/FL	ID	W
10010	Q1133UL STEPPED RADIAL CONTACT SEIMANS TM1-TS1/DABI ALANTE MS350 BEARINGS (2)	.235/.250	0.125	0.093	5.97/6.35	3.18	2.36
PART NUMBERS THAT HAVE THIS BEARING	DESCRIPTION	MEASUREMENT IN INCHES			MEASUREMENT IN MM		
		OD/FL	ID	W	OD/FL	ID	W
60103C	Q1134UL ANGULAR CONTACT FLANGED STAINLESS STEEL, SINGLE SHIELD, PHENOLIC STAR 430K/SWL BEARINGS	.250/.296	0.125	0.091	6.35/7.52	3.175	2.311

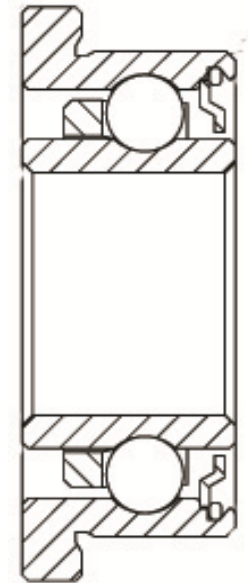
PART NUMBERS		DESCRIPTION	MEASUREMENT IN INCHES			MEASUREMENT IN MM		
THAT HAVE	ANGULAR CONTACT INTERGRAL SHIELD		OD/FL	ID	W	OD/FL	ID	W
THIS BEARING	CERAMIC BALLS		.250/.260	0.125	0.1094	6.35/6.604	3.175	2.78
60103LTLC	STAR 430 HANDPICES							

PART NUMBERS		DESCRIPTION	MEASUREMENT IN INCHES			MEASUREMENT IN MM		
THAT HAVE	RADIAL STAINLESS STEEL PHENOLIC		OD/	ID	W	OD/	ID	W
THIS BEARING	MYONIC BEARING		0.25/.235	0.25	0.1094	6.35/5.969	6.35	2.77
10101PH	KAVO HANDPIECES							

PART NUMBERS THAT HAVE THIS BEARING	DESCRIPTION	MEASUREMENT IN INCHES			MEASUREMENT IN MM		
		OD/FL	ID	W	OD/FL	ID	W
	ANGULAR CONTACT, FLANGED STAINLESS SINGLE SHIELD POLYAMIDE (TORLON) Q1111L	.25/.296	0.125	0.109	6.34/7.518	3.2	2.736
30101	SBI/CUTTERJET/MIN/OPTIK						
40405	MIDWEST QUIET AIR FLANGED						
40405A	MIDWEST QUIET AIR FLANGED						
40405ANG	MIDWEST QUIET AIR FLANGED MIDWEST TRADITION FLANGED MIDWEST QUIET AIR FLANGED						
50107ANG	VIPER FLANGED BEARING DENTEX MS-M MINI PB TURBINE DABI ATLANTE RS-350 TURBINE						



PART NUMBERS THAT HAVE THIS BEARING	DESCRIPTION	MEASUREMENT IN INCHES			MEASUREMENT IN MM		
		OD/FL	ID	Width	OD/FL	ID	Width
	RADIAL CONTACT, FLANGED STAINLESS SINGLE SHIELD POLYAMIDE (TORLON) Q1111LR	.25/.296	0.125	0.109	6.34/7.518		2.7686
10014	<i>NSK Phatelus Bearing</i>						
40405B	<i>Midwest Bearing</i>						
40405RAD	<i>Midwest Bearing flanged in set</i>						
40418	<i>Midwest Tradition Bearing flanged in set</i>						
50107	<i>ADEC/Viper 360 /Top Air</i>						

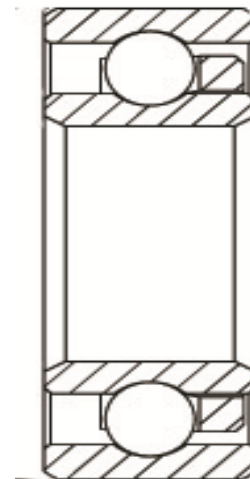


SIDE VIEW

PART NUMBERS THAT HAVE THIS BEARING	DESCRIPTION	MEASUREMENT IN INCHES			MEASUREMENT IN MM		
		OD	ID	Width	OD	ID	Width
	ANGULAR CONTACT POLYAMIDE (TORLON) STAINLESS STEEL Q1111U	0.25	0.125	0.093	6.35	3.175	2.36
40405ANG	MIDWEST TRADITION/ QUIET AIR STRAIGHT BEARING						
40405D	MIDWEST TRADITION/ QUIET AIR STRAIGHT BEARING						

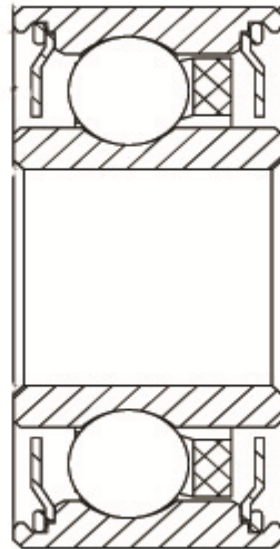


PART NUMBERS THAT HAVE	DESCRIPTION	MEASUREMENT IN INCHES			MEASUREMENT IN MM		
		OD	ID	W	OD	ID	W
	RADIAL CONTACT POLAMIDE(TORLON) STAINLESS STEEL Q1112U	0.25	0.125	0.093	6.35	3.175	2.36
30112	PUSH BUTTON AND STANDARD CANISTER						
40405	MIDWEST QUIET AIR RADIAL STR.OF SET						
40405C	MIDWEST QUIET AIR AND RADIAL STR.						
40405RAD	MIDWEST QUIET AIR AND TRADITON RADIAL STR.OF SET						
40417	MIDWEST 8000/I SET						
40418	MIDWEST TRADITION STR. OF SET						
40434	MIDWEST TRUE TORC REAR BEARING						

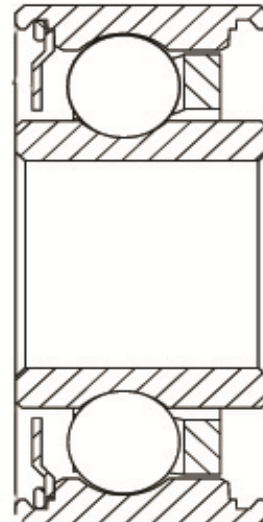


SIDE VIEW

PART NUMBERS THAT HAVE THIS BEARING	DESCRIPTION RADIAL CONTACT DOUBLE SHIELD PHELONIC GREASED BEARING (Q1114ULK)	MEASUREMENT IN INCHES			MEASUREMENT IN MM		
		OD/FL	ID	W	OD/FL	ID	W
		0.3125	0.125	0.1406	7.92	3.175	3.571
10012A2	BIEN AIR						
60101	STAR FUTURA 1 & II						
60104	STARFLITE						
60105	STAR CONCENTRIC						

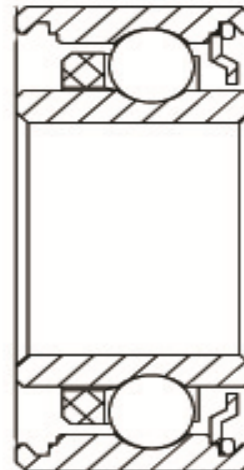


PART NUMBERS THAT HAVE THIS BEARING	DESCRIPTION RADIAL SINGLE SHIELD PHENOLIC GREASED STRAIGHT BEARING (Q1114ULK1)	MEASUREMENT IN INCHES			MEASUREMENT IN MM		
		OD	ID	W	OD	ID	W
10012A1	BEIN AIR/BORA/LAB NEY	0.3215	0.125	0.1406	8.166	3.175	3.571
60101A	BIEN AIR BLACK PEARL NEY						
9000A	BIEN AIR BLACK PEARL NEY						



PART NUMBERS THAT HAVE THIS BEARING	DESCRIPTION RADIAL SINGLE SHIELD POLYAMIDE(TORLOR) OIL	MEASUREMENT IN INCHES			MEASUREMENT IN MM		
		OD	ID	W	OD	ID	W
		0.25	0.125	0.109	6.35	3.175	2.769

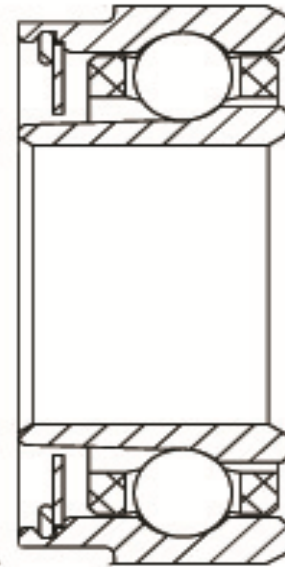
10011 BEIN AIR ONDINE/PRESTIGE/SYNEA/SIRONA
 60102 STAR ULTRA, TOP AIR/LIET 898
 60106 STAR CONCENTRIC MINI, W&H SYENA
 70101 MYTEE MICRON
 80101 SABRA
 ALSO USED ON: W&H TREND,/ADEC 396-796-896/ W&H TOPAIR 898
 SIRONA T2/T3 RACER MINI SWIVEL
 AND SIRONA T2/T3 CARTRIDGE
 SYNEA TA98 LED TURBINE



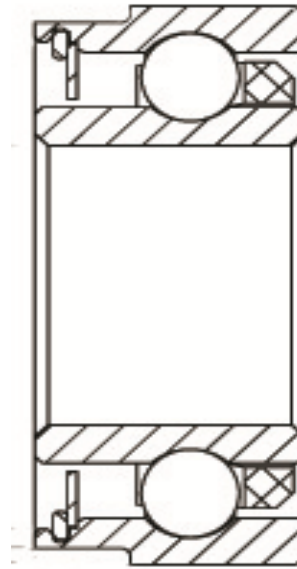
PART NUMBERS THAT HAVE THIS BEARING	DESCRIPTION	MEASUREMENT IN INCHES			MEASUREMENT IN MM		
		OD/STEP	ID	W	OD/STEP	ID	W
10101	RADIAL POLYAMIDE STAINLESS STEEL SINGLE SHIELD 01118UL KAVO AND LYNX HANDPIECE	.235/.250	0.125	0.109	5.96/6.34	3.18	2.76

NOT PICTURED

PART NUMBERS THAT HAVE THIS BEARING	DESCRIPTION	MEASUREMENT IN INCHES			MEASUREMENT IN MM		
		OD/STEP	ID	W	OD/STEP	ID	W
10101ANG 10101KV647/649	ANGULAR CONTACT SINGLE STAINLESS STEEL SINGLE SHIELD POLYAMIDE(TORLON) STEPPED (Q1118ULA.250/.2350 KAVO SM/LG AMD LUX 647/649 BEARING KAVO 647/649 F4 TURBINE	6.35/5.969	0.125	0.1094	6.35/5.969	3.175	2.779



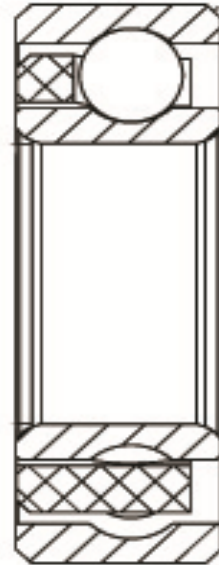
PART NUMBERS THAT HAVE THIS BEARING	DESCRIPTION	MEASUREMENT IN INCHES			MEASUREMENT IN MM		
		OD/STEP	ID	W	OD/STEP	ID	W
10101A	RADIAL PHELONIC (LINEN BASE) SINGLE SHIELD STAINLESS STEEL STEPPED BEARING Q1118ULK) <i>KAVO SM AND LARGE/SIRONA PUSH BUTTON BEARING SIRONA TC3, VECTOR</i>	.250/.235	0.125	0.1094	6.35/5.969	3.175	2.779



PART NUMBERS THAT HAVE THIS BEARING	DESCRIPTION STEEL BEARINGS RADIAL STRAIGHT (Q1119IL)	MEASUREMENT IN INCHES			MEASUREMENT IN MM		
		OD/FL	ID	W	OD/FL	ID	W
40421	MINI BEARINGS USED FOR VARIOUS USES	0.186	0.093	0.093	4.73	2.316	2.36

NOT PICTURED

PART NUMBERS THAT HAVE THIS BEARING	DESCRIPTION	MEASUREMENT IN INCHES			MEASUREMENT IN MM		
		OD	ID	W	OD	ID	W
	RADIAL POLYAMIDE (TORLON) STAINLESS STEEL UNFLANGED BEARING (Q11119U)	0.187	0.094	0.0625	4.75	2.39	1.59
40431	MIDWEST TRU TORQ TIGHTENING ROD BEARING						
40435	MIDWEST TRU TORQ/SHORTY DRIVE RING BEARING						



PART NUMBERS THAT HAVE THIS BEARING	DESCRIPTION	MEASUREMENT IN INCHES			MEASUREMENT IN MM		
		OD	ID	W	OD	ID	W
40430	RADIAL CONTACT NO SHIELDED POLYAMIDE Q1121 MIDWEST TRU TORC SPINDLE BEARING	0.312	0.219	0.276	7.92	5.56	7.01

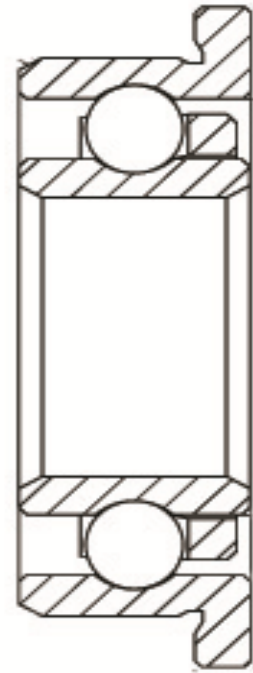
NOT PICTURED

PART NUMBERS THAT HAVE THIS BEARING	DESCRIPTION	MEASUREMENT IN INCHES			MEASUREMENT IN MM		
		OD	ID	W	OD	ID	W
40432	ANGULAR CONTACT SINGLE SHIELDED STAINLESS Q1122 MIDWEST TRU TORC SPINDLE BEARING	0.625	0.25	0.196	15.88	6.34	4.96

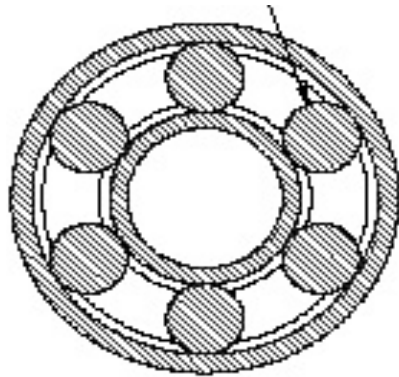


PART NUMBERS THAT HAVE THIS BEARING	DESCRIPTION	MEASUREMENT IN INCHES			MEASUREMENT IN MM		
		OD/FL	ID	W	OD/FL	ID	W
		.250/.296	0.125	0.0937	6.35/7.518	3.175	2.38

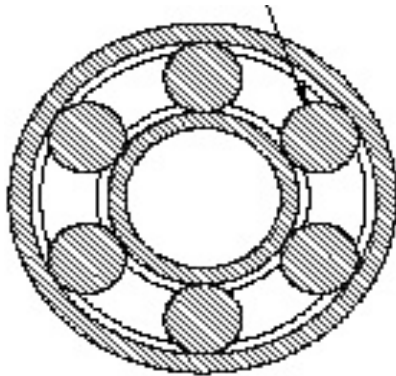
40430 *MIDWEST TRUE TORC FRONT SPINDLE BEARING*



PART NUMBERS THAT HAVE THIS BEARING	DESCRIPTION RADIAL CONTACT STRAIGHT BEARING (Q1124)	MEASUREMENT IN INCHES			MEASUREMENT IN MM		
		OD	ID	W	OD	ID	W
60225	STAR TITAN BEARING (front)	0.312	0.125	0.109	7.12	3.18	2.76



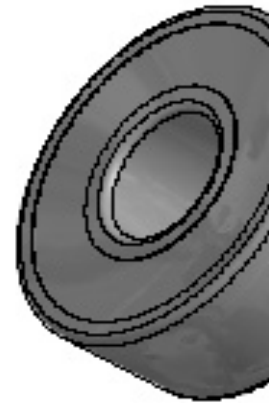
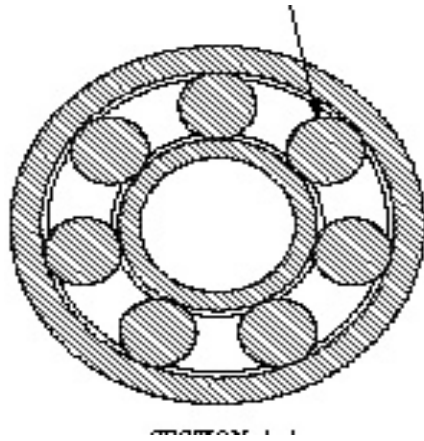
PART NUMBERS THAT HAVE THIS BEARING	DESCRIPTION	MEASUREMENT IN INCHES		
		OD	ID	W
		0.375	0.125	0.109
60224	STAR TITAN BEARING (rear)			



MEASUREMENT IN MM

OD	ID	W
9.52	3.18	2.76

PART NUMBERS THAT HAVE THIS BEARING	DESCRIPTION	MEASUREMENT IN INCHES		
		OD	ID	W
60223	STAR TITAN BEARING (front)			



MEASUREMENT IN MM

OD ID W



PART NUMBERS THAT HAVE THIS BEARING	DESCRIPTION	MEASUREMENT IN INCHES		
		OD	ID	W
	Q1127 RADIAL CONTACT STRAIGHT BEARING	0.375	0.25	0.125
50570	CHAMPION LITTLE FRONT CHUCK BEARING			
60251A	STAR NOSE CONE FRONT BEARING			

MEASUREMENT IN MM

OD	ID	W
9.52	6.35	3.16

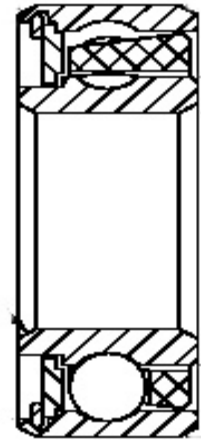
Q1128

PART NUMBERS THAT HAVE THIS BEARING	DESCRIPTION Q1128 STRAIGHT RADIAL BEARING	MEASUREMENT IN	
		OD	ID
		0.375	0.186
40436	FRONT SPINDLE BEARING FOR MW SHORTY 1 & 2		
60251	CHAMPON LITTLE GUY NOSE CONE BACK BEARING		

NOT PICTURED

INCHES	MEASUREMENT IN MM		
W	OD	ID	W
0.125	9.52	4.73	3.16

PART NUMBERS THAT HAVE THIS BEARING	DESCRIPTION	MEASUREMENT IN INCHES			MEASUREMENT IN MM		
		OD	ID	W	OD	ID	W
	RADIAL STAINLESS STEEL POLYAMIDE (TORLON) SINGLE SHIELD Q 1132L	0.25	0.125	0.093	6.35	3.175	2.36
50106	LARES 557/757 NON PUSH BUTTON						
50106B	LARES 557/757 PUSH BUTTON THICK (UPPER)						



PART NUMBERS THAT HAVE THIS BEARING	DESCRIPTION	MEASUREMENT IN INCHES			MEASUREMENT IN MM		
		OD	ID	W	OD	ID	W
50108A	Q1132U RADIAL POLYAMIDE STAINLESS STEEL STRAIGHT BEARING LARES 557/757 PUSH BUTTON THIN (UPPER)	0.25	0.125	0.075	6.35	3.175	1.905



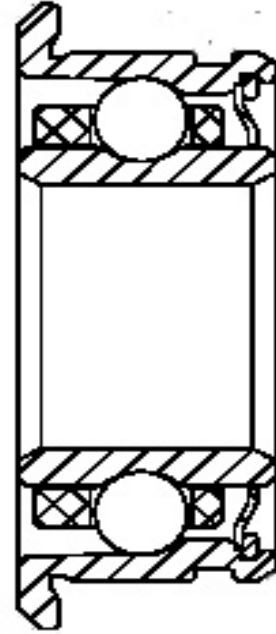
PART NUMBERS THAT HAVE THIS BEARING	DESCRIPTION	MEASUREMENT IN INCHES		
		OD/FL	ID	W
10010	SEIMANS TM1-TS1/DABI ALANTE MS350 BEARINGS (2)	.235/.250	0.125	0.093

NOT PICTURED

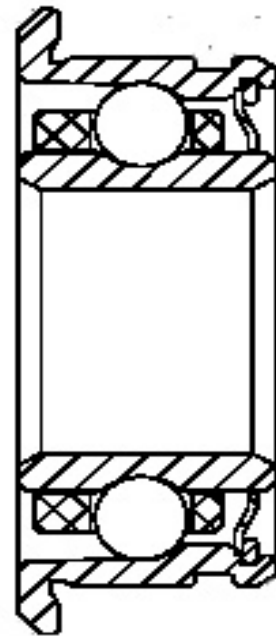
MEASUREMENT IN MM

OD/FL	ID	W
5.97/6.35	3.18	2.36

PART NUMBERS THAT HAVE THIS BEARING	DESCRIPTION	MEASUREMENT IN INCHES			MEASUREMENT IN MM		
		OD/FL	ID	W	OD/FL	ID	W
60103C	Q1134UL ANGULAR CONTACT FLANGED STAINLESS STEEL, SINGLE SHIELD, PHENOLIC STAR 430K/SWL BEARINGS	.250/.296	0.125	0.091	6.35/7.52	3.175	2.311



PART NUMBERS THAT HAVE THIS BEARING	DESCRIPTION	MEASUREMENT IN INCHES			MEASUREMENT IN MM		
		OD	ID	W	OD	ID	W
60103C	Q1134UL ANGULAR CONTACT FLANGED STAINLESS STEEL, SINGLE SHIELD, PHENOLIC STAR 430K/SWL BEARINGS	.250/.296	0.125	0.091	6.35/7.52	3.175	2.311



PART NUMBERS THAT HAVE THIS BEARING	DESCRIPTION	MEASUREMENT IN INCHES			MEASUREMENT IN MM		
		OD	ID	W	OD	ID	W
	Q1138KA STRAIGHT RADIAL DOUBLE SHIELDED STAINLESS STEEL	0.237	0.077	0.09	6	1.95	2.28
10118A	SPECIAL BEARING FOR KAVO INTERFLEX FRONT						

NOT PICTURED

PART NUMBERS THAT HAVE THIS BEARING	DESCRIPTION Q1138KB STRAIGHT RADIAL DOUBLE SHIELDED STAINLESS STEEL	MEASUREMENT IN INCHES		
		OD	ID	W
10118B	SPECIAL BEARING KAVO INTERFLEX REAR	0.275	0.118	0.077

NOT PICTURED

MEASUREMENT IN MM

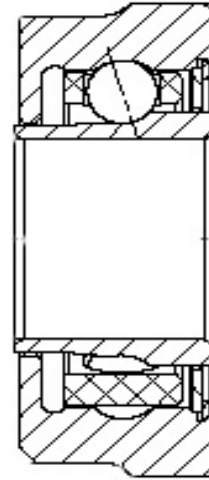
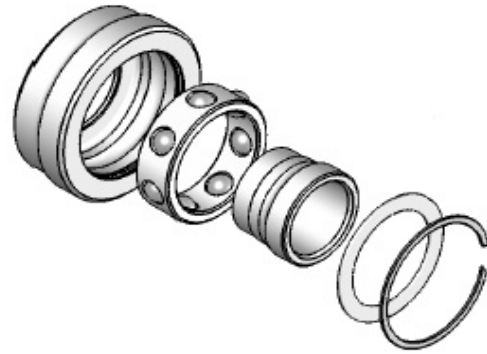
OD	ID	W
6.98	3	1.95

PART NUMBERS		DESCRIPTION	MEASUREMENT IN INCHES		
THAT HAVE		Q1139U STEEL STRAIGHT	OD	ID	W
THIS BEARING	Q1138U		0.499	0.187	0.156
40470A		MIDWEST SHORTY NOSE CONE (LATCH) REAR BRG			

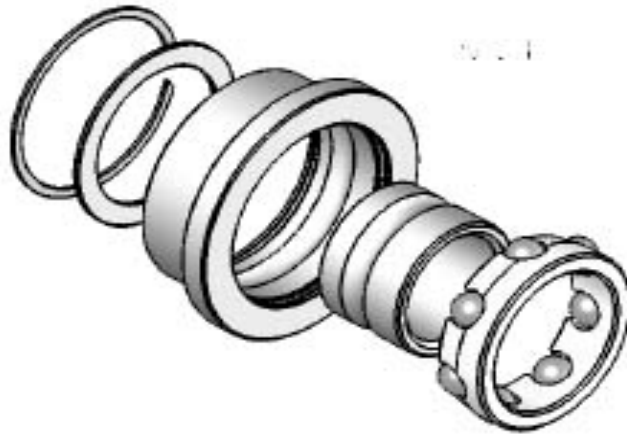
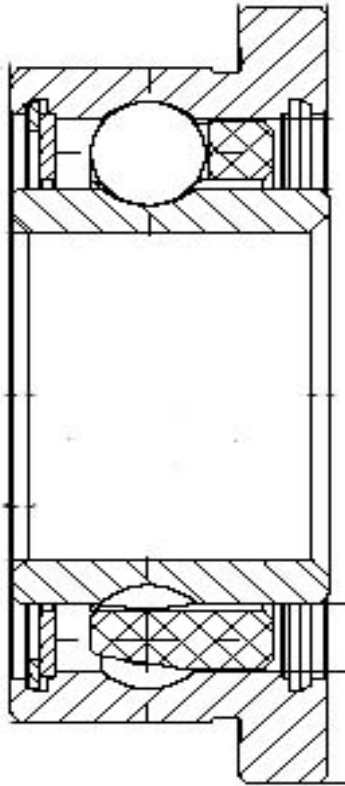
MEASUREMENT IN MM

OD	ID	W
12.68	4.74	3.95

PART NUMBERS THAT HAVE THIS BEARING	DESCRIPTION	MEASUREMENT IN INCHES			MEASUREMENT IN MM		
		OD/FL	ID	W	OD/FL	ID	W
40405SEC	MIDWEST STYLUS LTL EASY CARE BEARING	.2797/.2960	0.125	0.113	7.15/7.519	3.175	2.87



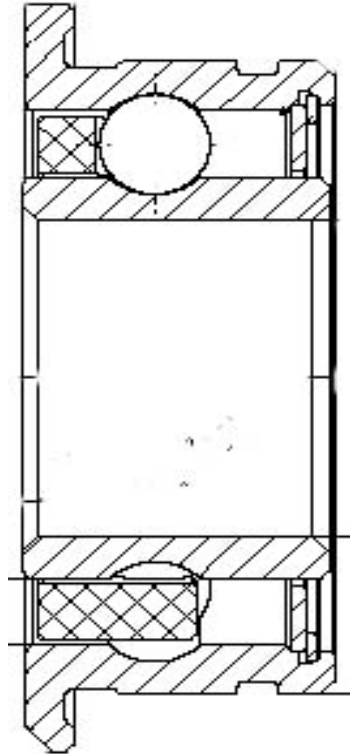
PART NUMBERS THAT HAVE THIS BEARING	DESCRIPTION	MEASUREMENT IN INCHES			MEASUREMENT IN MM		
		OD/FL	ID	W	OD/FL	ID	W
40405BP	FLANGED STAINLESS STEEL PHENOLIC MYONIC BEARING RADIAL MIDWEST QUIET AIR, TRADITION, XGT	.250/.2960	0.125	0.1094	6.35/7.518	3.175	2.78



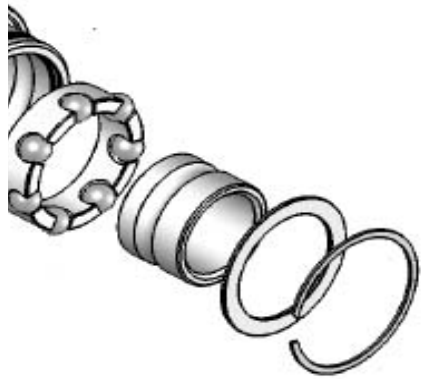
PART NUMBERS THAT HAVE THIS BEARING	DESCRIPTION	MEASUREMENT IN INCHES			MEASUREMENT IN MM		
		OD	ID	W	OD	ID	W
		0.25	0.125	0.0937	6.35	3.175	2.38
40405CP	MIDWEST TRADITION, QUIET AIR, MANY APPLICATIONS						



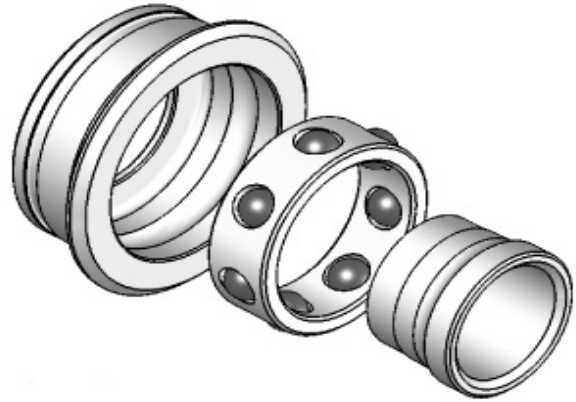
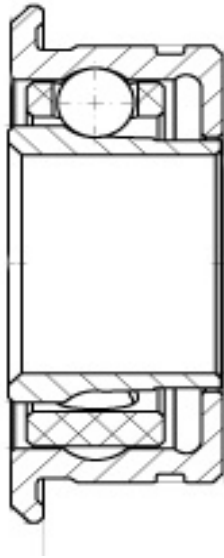
PART NUMBERS	DESCRIPTION	MEASUREMENT IN	
THAT HAVE	60103CP PHENOLIC STAINLESS STEEL FLANGED	OD/FL	ID
THIS BEARING	MYOINIC	.250/.2960	0.125
60103CP	Star 430 BEARINGS		



INCHES	MEASUREMENT IN MM		
W	OD/FL	ID	W
0.1094	6.35/7.518	3.175	2.78



PART NUMBERS THAT HAVE THIS BEARING	DESCRIPTION ANGULAR CONTACT INTERGRAL SHIELD CERAMIC BALLS	MEASUREMENT IN INCHES		
		OD/FL	ID	W
		.250/.260	0.125	0.1094
60103LTL	STAR 430 HANDPICES			



MEASUREMENT IN MM

OD/FL	ID	W
6.35/6.604	3.175	2.78

PART NUMBERS THAT HAVE THIS BEARING	DESCRIPTION RADIAL STAINLESS STEEL PHENOLIC MYONIC BEARING	MEASUREMENT IN INCHES			MEASUREMENT IN MM		
		OD/ 0.25/.235	ID 0.25	W 0.1094	OD/ 6.35/5.969	ID 6.35	W 2.77
10101PH	KAVO HANDPIECES						

